

Audio unit menus

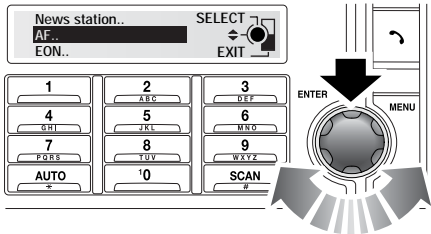
RADIO BROADCAST DATA SYSTEM (RBDS)

Your audio system is equipped with RBDS (Radio Broadcast Data System), which enables the audio unit to receive extra information with the normal radio signals.

Note: Not all FM radio stations broadcast RBDS. If you select a non-RBDS station, RBDS features will not be available.

ALTERNATIVE FREQUENCIES

As the RBDS receives information about the frequencies being used by nearby transmitters, it can choose the strongest signal for the selected station. With the Alternative Frequencies (AF) feature enabled, you will not need to retune the radio as you drive between different transmitter areas.



E83262

1. With **FM1**, **FM2** or **FMA** selected, press the **MENU** button.
2. Use the rotary control to select **FM Settings** and press to select.
3. Use the rotary control to select **Advanced settings** and press to confirm selection.

Note: The **Advanced settings** menu is not available while the vehicle is moving.

4. Use the rotary control to select **AF** and press to confirm selection.
5. To enable AF mode, rotate the control until **On** is highlighted and press to confirm selection.

PRIORITY PROGRAMME TYPE (PTY)

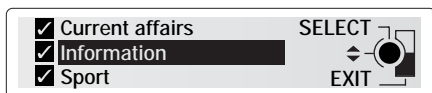
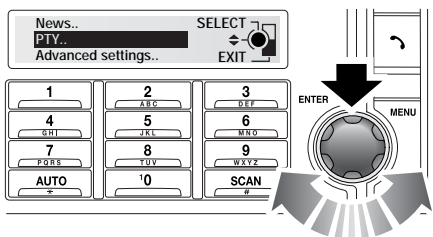
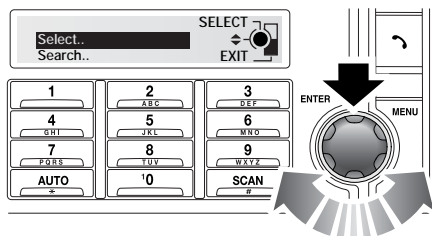
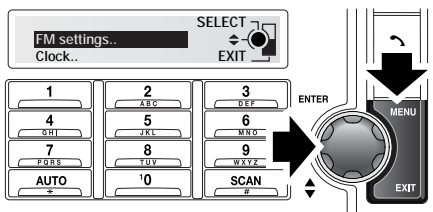
The RBDS allows programmes to be categorised by the broadcast type (rock music, current affairs, news, etc).

This in turn allows you to search for a station by choosing the type of broadcast that you wish to listen to.

PTY selection

The type of programme searched for by the PTY feature can be selected from the PTY selection list.

Audio unit menus



E83736

E86332

1. Press the **Menu** button to enter the menu.
2. Press the rotary control to select **FM settings**.
3. Use the rotary control to scroll through the menu until **PTY** is highlighted, then press the rotary control.

4. Use the rotary control to scroll through the menu until **Select** is highlighted, then press the rotary control.
5. Having entered the **PTY** select menu, use the rotary control to scroll through the programme types until your choice is highlighted.
6. Press the rotary control to select or deselect the programme type(s) required.
7. Press the **EXIT** button to return to the **PTY** menu.

PTY programme types

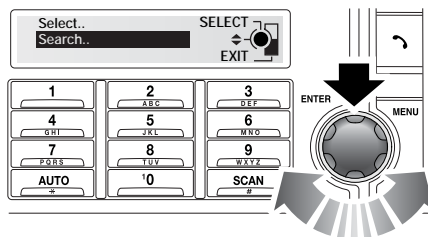
1. News
2. Information
3. Sports
4. Talk
5. Rock
6. Classic rock
7. Adult hits
8. Soft rock
9. Top 40
10. Country

Audio unit menus

11. Oldies
12. Soft
13. Nostalgia
14. Jazz
15. Classical
16. Rhythm and blues
17. Soft R&B
18. Foreign language
19. Religious music
20. Religious talk
21. Personality
22. Public
23. College
24. Weather

PTY search

1. Press the **Menu** button to enter the menu.
2. Press the rotary control to select **FM settings**.
3. Use the rotary control to scroll through the menu until **PTY** is highlighted, then press the rotary control.



E85367

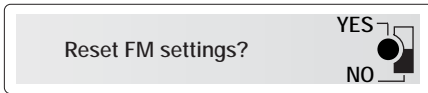
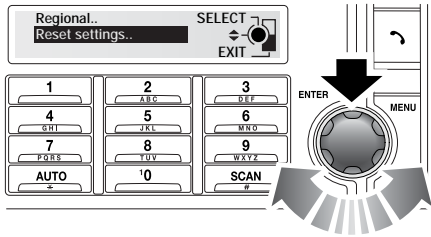
4. Use the rotary control to scroll through the menu until **Search** is highlighted, then press the rotary control. The audio system will then search for all pre-selected programme types.
5. To abort a **PTY** search, press the **EXIT** button.

Once the search is complete, **PTY** will be displayed on the screen with the station information. To skip to the next or previously stored PTY station, press the forward or rearward search arrow button.

RESETTING THE AUDIO UNIT

It is possible to reset the RBDS settings to the default values in one operation.

Audio unit menus



E83537

1. With the preferred news station selected, press the **MENU** button.
2. Use the rotary control to select **FM Settings** and press to confirm.
3. Use the rotary control to highlight **Advanced settings** and press to select.

Note: The **Advanced settings** menu is not available while the vehicle is moving.

4. Rotate the control until **Reset settings** is selected and press to confirm selection.
5. When the message **Reset FM settings?** appears, press the rotary control to confirm, or the **EXIT** button to cancel.